

This Solution requires only a single relocation of all City Administrative functions and avoids costly conflicts created by building Police HQ and City Hall in the same structure.

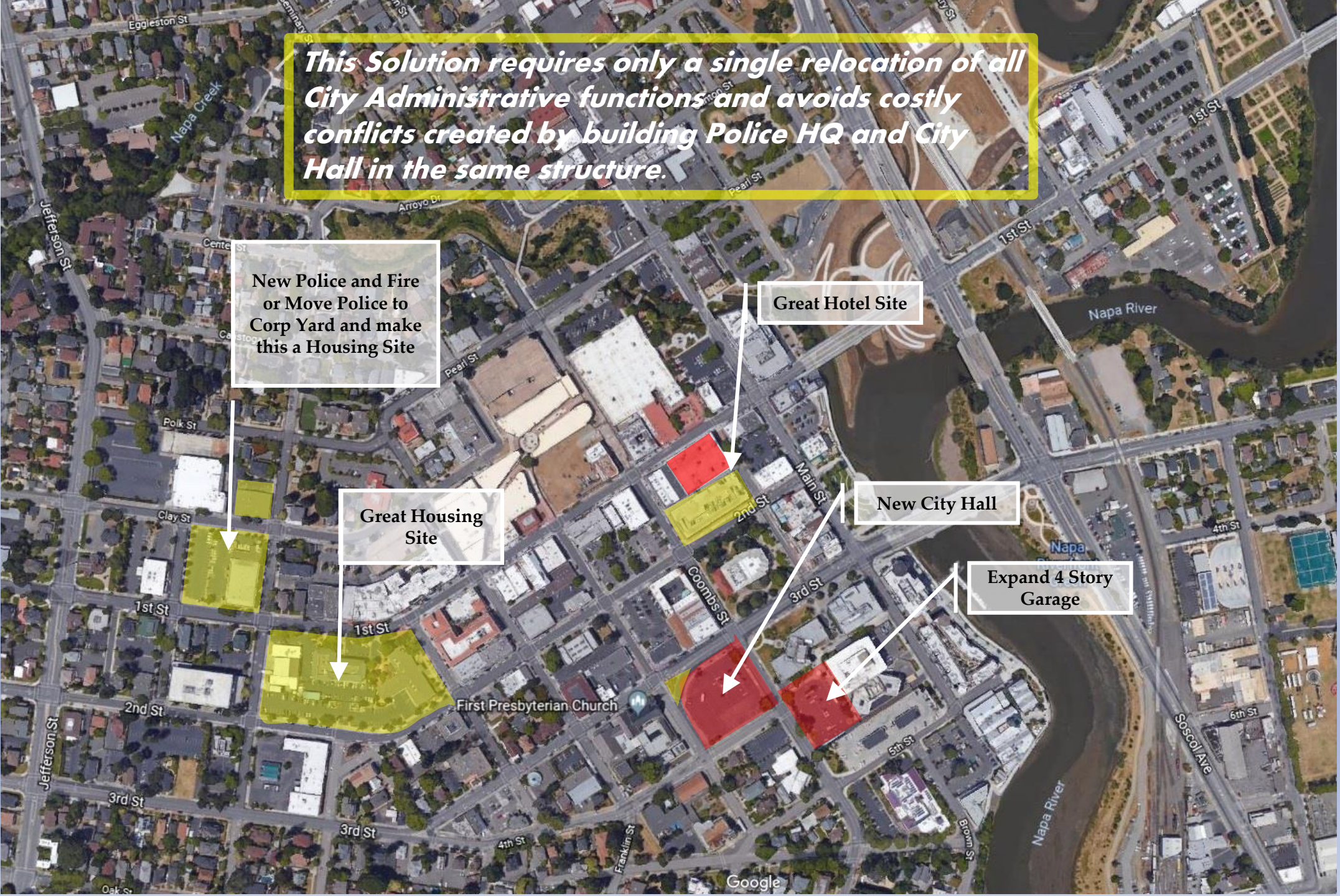
**New Police and Fire
or Move Police to
Corp Yard and make
this a Housing Site**

Great Hotel Site

**Great Housing
Site**

New City Hall

**Expand 4 Story
Garage**





Possible
Alternate Police
HQ

Consolidate Corp Yards
and this land is freed for
housing

2 ac

City Corp Yard
8 ac